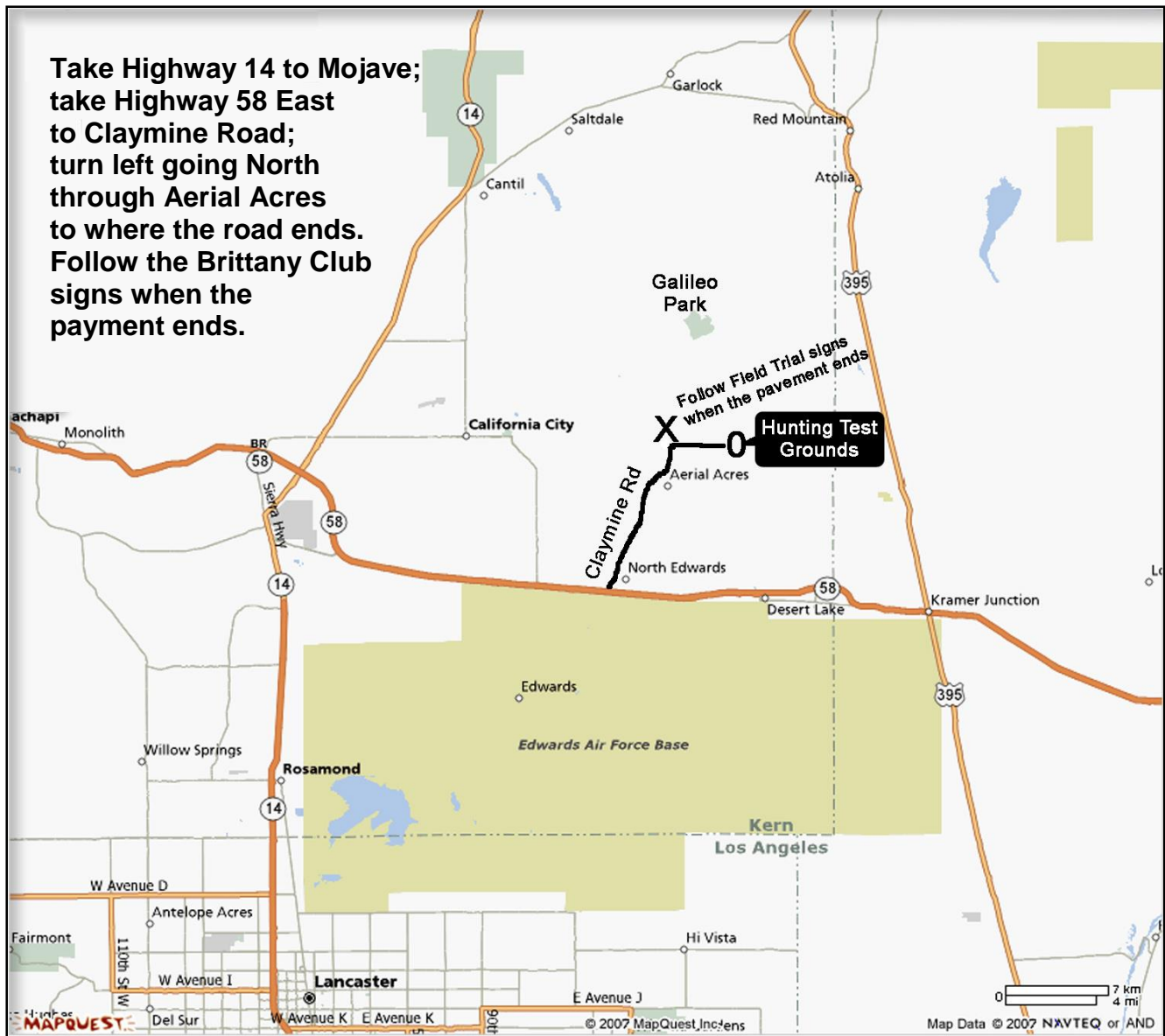


THE ALL IMPORTANT DIRECTIONS



Lodging and Other Vital Info

Motels in Mojave

Mariah Country Inn & Suites – 661-824-4980 **Econolodge** 661-824-2463
Travelers Inn 661-824-2441 **Desert Inn** 661-824-2518

Camping is permitted on the grounds. There will be a porta-potty.
Water will be available at the starting line and at the bird field
Weather – Be prepared for anything

Bracing Information will be available on the club's website
After the drawing date.

www.californiabrittanyclub.org and www.sandiegobrittany.org